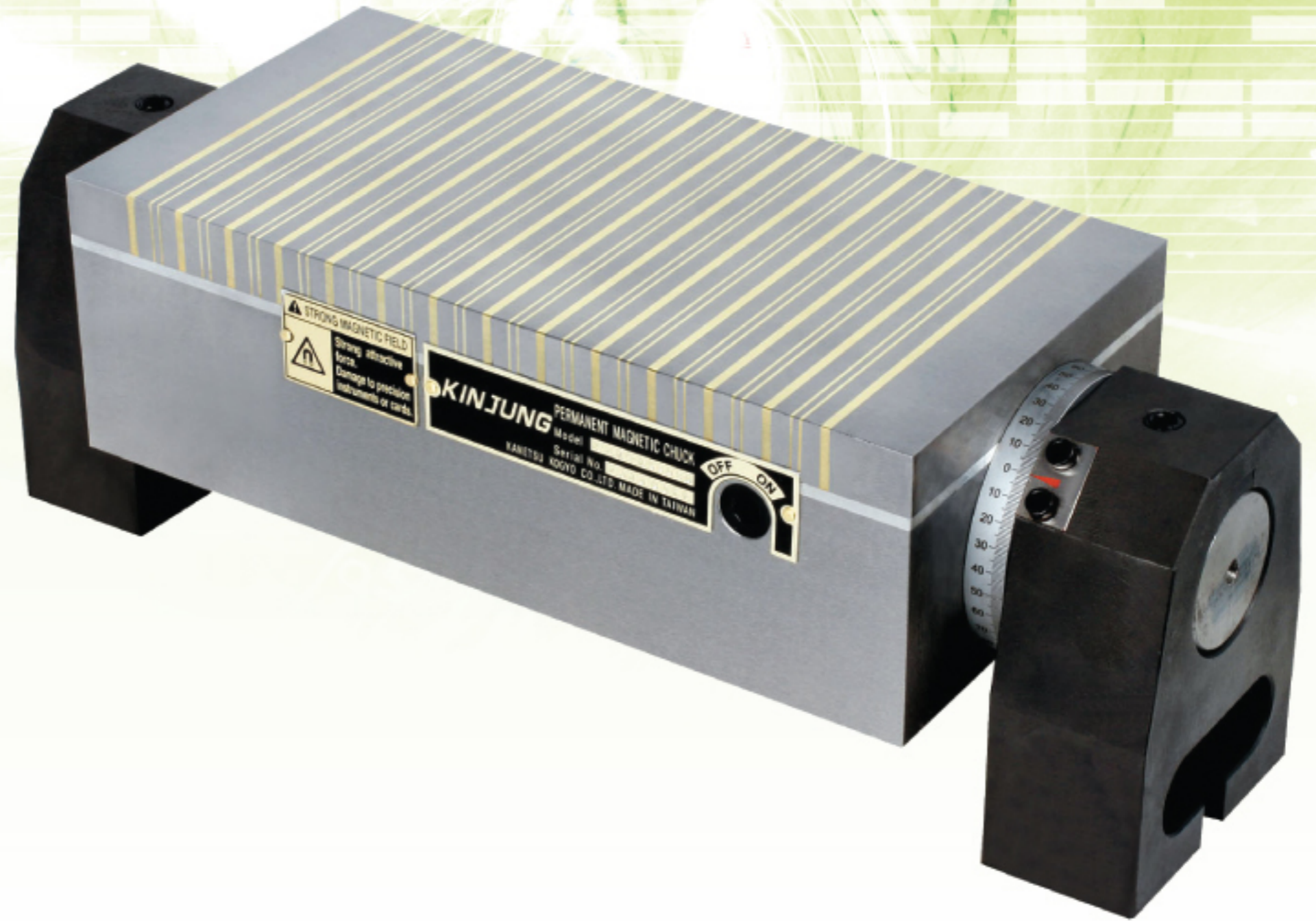
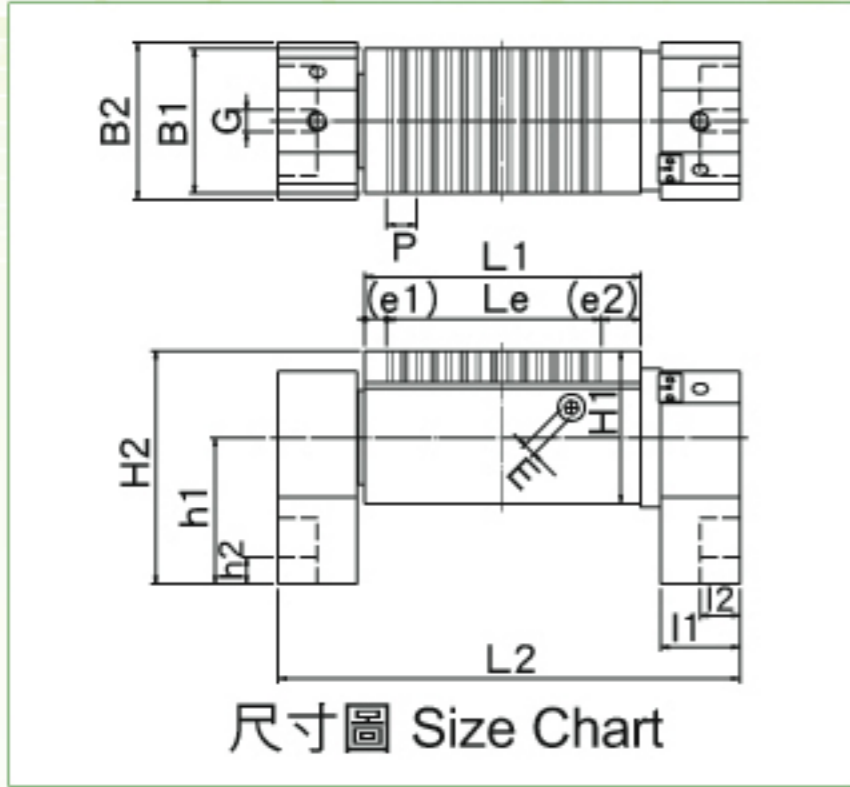


可傾永磁夾盤 Rotary Permanent Magnetic Chuck KMT-BU



用途:

最適合在磨床上作角度磨削。

特性:

- 研磨角度以刻度旋轉軸，很容易將所需之角度調整出來。
- 夾盤安置容易，而能進行高精度加工。

Application:

It is suitable for angle grinding on the grinder.

Features:

- The graduated rotary shaft makes it easy to grind at any angle.
- The chuck is easy to install and ensure you of high precision machining process.

規格表 Specilication Table

mm

型式 Model	尺寸 Nominal Dimension	夾盤作業面 Chucking Face						磁極間隔 Pole Pitch P	可傾台 Rotary Stand						全長 Overall Length L2	全高 Overall Height H2	六角孔 Hexagonal Handle Hole E	重量 Weight
		B1	L1	Le	H1	e1	e2		B2	I1	I2	G	h1	h2				
KMT-1018BU	100×175	100	175	136	97	14	25	19(3+6+1+2+1+6)	100	50	25	14	93	17	293	148	8	20.0Kg
KMT-1025BU	100×250	100	250	212	97	13	25	19(3+6+1+2+1+6)	100	50	25	14	93	17	368	148	8	26.0Kg
KMT-1325BU	125×250	125	250	212	97	13.7	24.3	19(3+6+1+2+1+6)	100	50	25	14	93	17	368	148	8	30.5Kg
KMT-1530BU	150×300	150	300	250	97	25	25	19(3+6+1+2+1+6)	100	50	25	14	93	17	418	148	8	39.0Kg
KMT-1535BU	150×350	150	350	307	97	18.5	24.5	19(3+6+1+2+1+6)	100	50	25	14	93	17	468	148	8	47.0Kg
KMT-1545BU	150×450	150	450	402	97	24	24	19(3+6+1+2+1+6)	100	50	25	14	93	17	568	148	8	58.5Kg