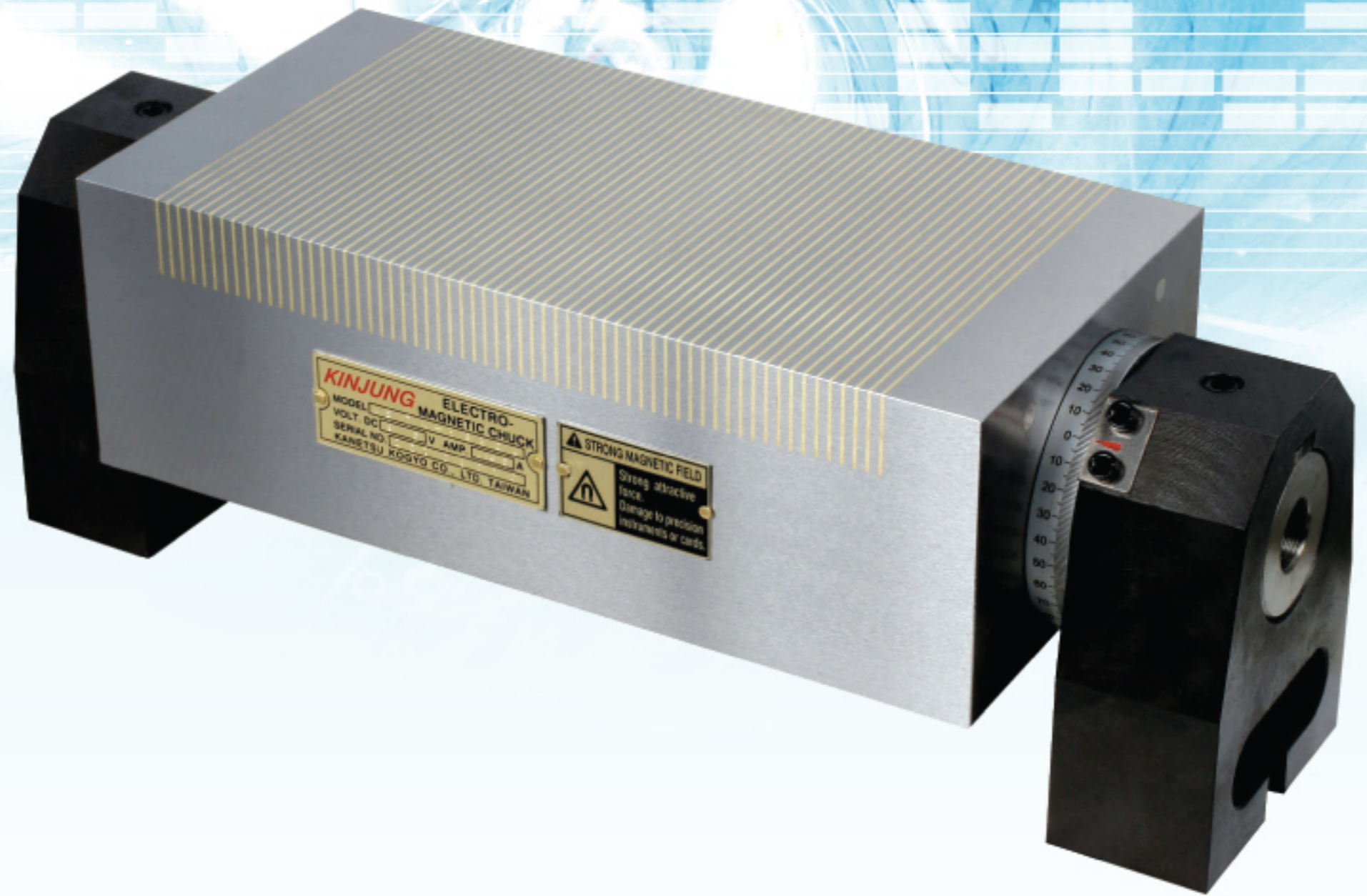
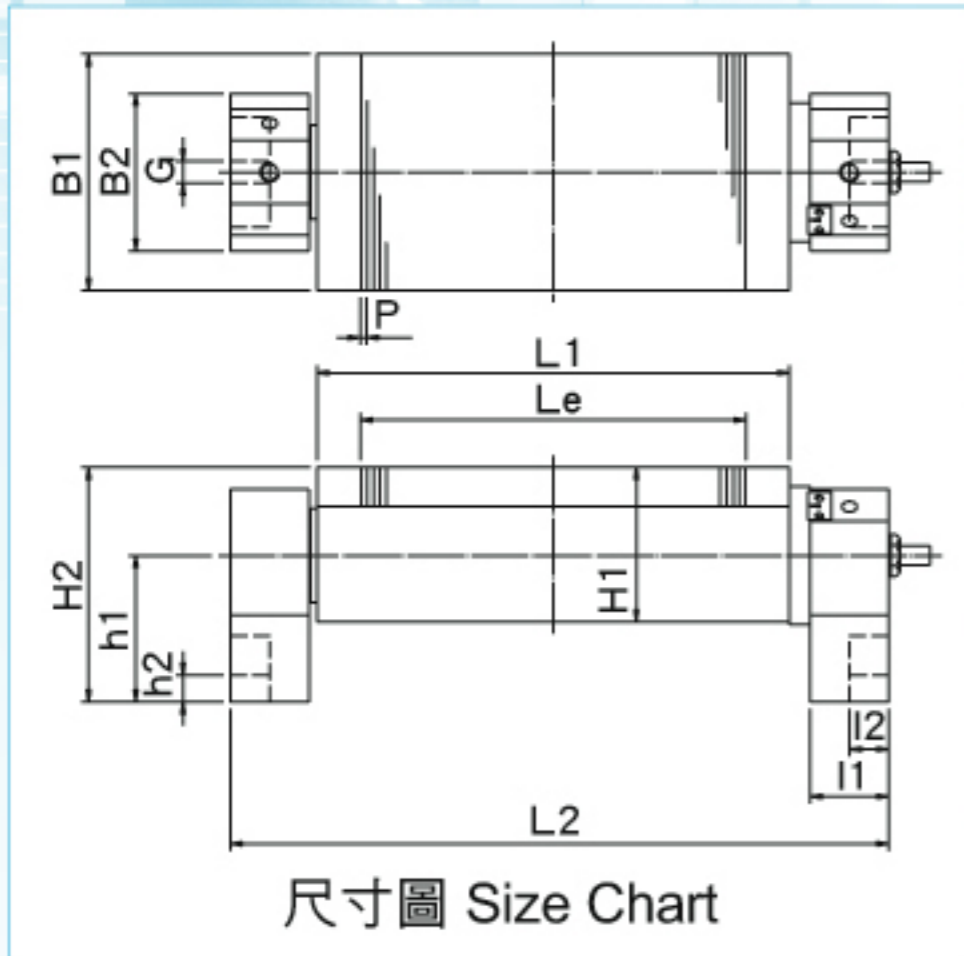


可傾微距型電磁夾盤 Rotary Micropitch Electro Magnetic Chuck

KETW-U



鐘通工業股份有限公司
KANETSU KOGYO CO., LTD.



用途:

適用於高精度之傾斜磨削加工。

特性:

- 夾盤具有刻度的旋轉軸，可隨意轉換任何角度。
- 此微距夾盤有良好磁距設計非常適用於小型及薄的工件角度磨削。

Application:

It is suitable for angle grinding on the grinder.

Features:

- The graduated rotary shaft makes it easy to grind at any angle.
- Fine-pitched magnetic poles on this micropitch model make it ideally suitable for angle grinding of small and thin workpieces.

規格表 Specification Table

mm

型式 Model	尺寸 Nominal Dimension	夾盤作業面 Chuckling Face				磁極間隔 Pole Pitch P	夾盤基準面 Chuck Mounting Part						全長 Overall Length L2	全高 Overall Height H2	電壓 Voltage	電流 Current	重量 Weight
		B1	L1	Le	H1		B2	I1	I2	G	h1	h2					
KETW-1530U	150×300	150	300	245	98	4(1+3)	100	50	25	14	93	17	418	149	DC90V	0.62A	37Kg
KETW-1535U	150×350	150	350	293	98	4(1+3)	100	50	25	14	93	17	468	149	DC90V	0.77A	43Kg
KETW-1545U	150×450	150	450	393	98	4(1+3)	100	50	25	14	93	17	568	149	DC90V	0.80A	56Kg
KETW-1550U	150×500	150	500	445	98	4(1+3)	100	50	25	14	93	17	618	149	DC90V	1.20A	62Kg
KETW-2040U	200×400	200	400	345	98	4(1+3)	100	50	25	14	93	17	518	178	DC90V	1.16A	61Kg
KETW-2045U	200×450	200	450	393	98	4(1+3)	100	50	25	14	93	17	568	178	DC90V	1.29A	69Kg

鐘通工業股份有限公司保有隨技術發展而衍生修改的權利。
KANETSU KOGYO CO., LTD. reserve the right to bring up any modification connected with the technological development.

