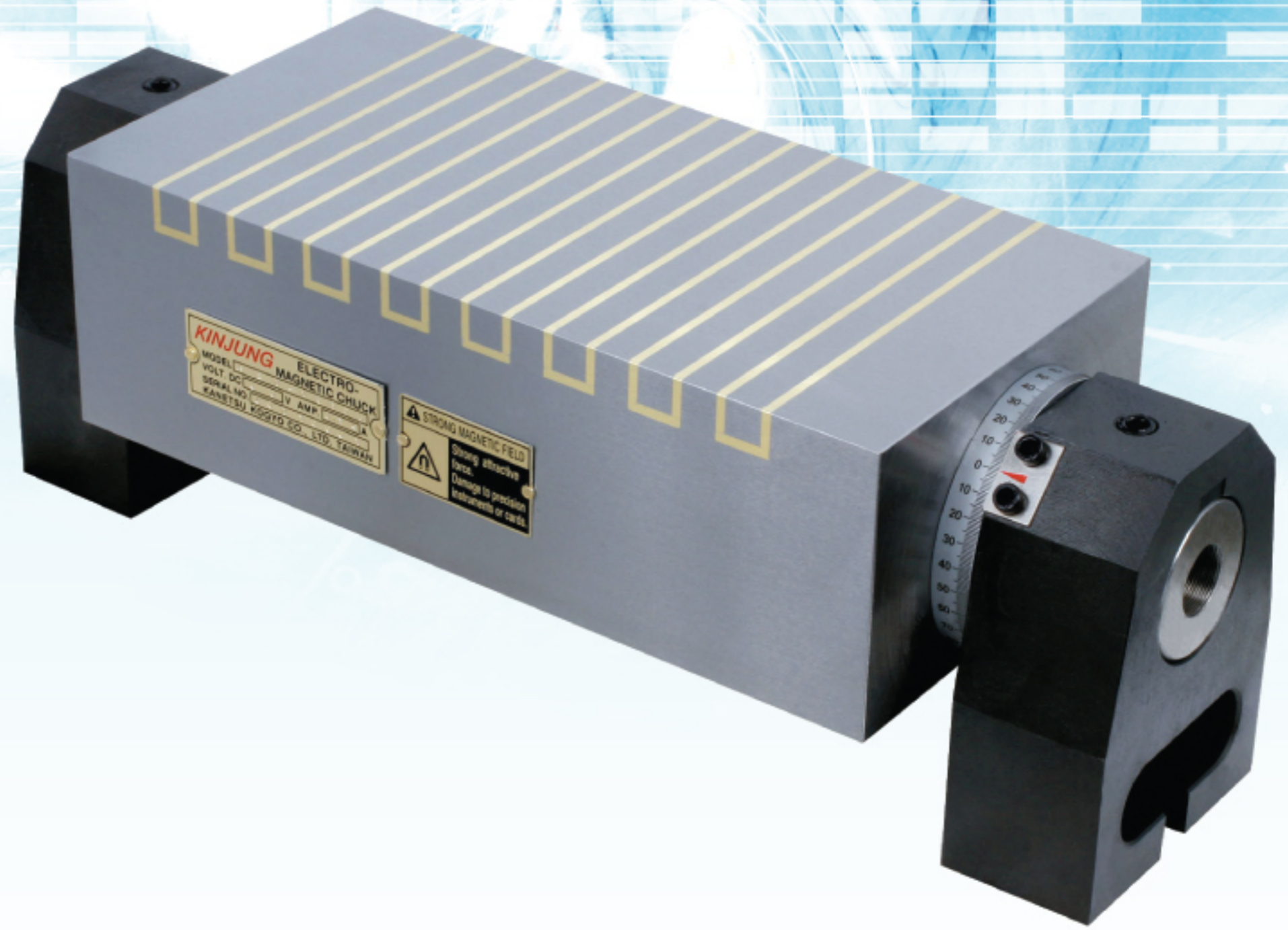
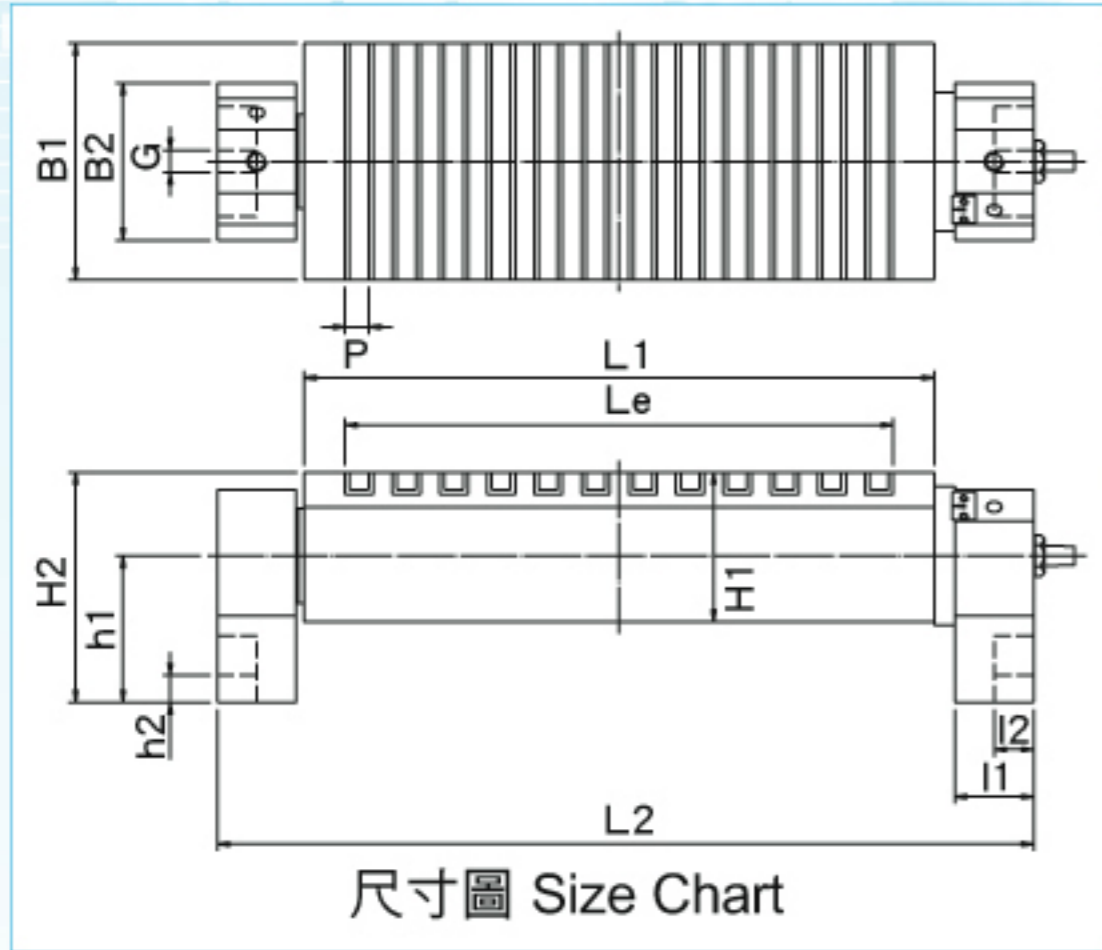


可傾標準型電磁夾盤 Rotary Standard Electro Magnetic Chuck

KET-U



鐘通工業股份有限公司
KANETSU KOGYO CO., LTD.



用途:

最適合夾具與模具之各種角度之精密磨削。

特性:

- 容易操作，可隨意轉換角度。
- 夾盤具有刻度的旋轉軸，可隨意轉換任何角度。

Application:

It is suitable for grinding jig and mold in various angles.

Features:

- It is easy to handle and to change its angle.
- The chuck has the rotary shaft with graduation and you can set any angle conveniently.

規格表 Specification Table

mm

型式 Model	尺寸 Nominal Dimension	夾盤作業面 Chuckling Face				磁極間隔 Pole Pitch P	夾盤基準面 Chuck Mounting Part						全長 Overall Length L2	全高 Overall Height H2	電壓 Voltage	電流 Current	重量 Weight
		B1	L1	Le	H1		B2	I1	I2	G	h1	h2					
KET-1025U	100×250	100	250	198	95	15(3+12)	100	50	25	14	93	17	368	146	DC90V	0.19A	21Kg
KET-1325U	125×250	125	250	198	95	15(3+12)	100	50	25	14	93	17	368	146	DC90V	0.16A	27Kg
KET-1530U	150×300	150	300	228	95	15(3+12)	100	50	25	14	93	17	418	146	DC90V	0.15A	37Kg
KET-1535U	150×350	150	350	288	95	15(3+12)	100	50	25	14	93	17	468	146	DC90V	0.23A	43Kg
KET-1540U	150×400	150	400	348	95	15(3+12)	100	50	25	14	93	17	518	146	DC90V	0.27A	50Kg
KET-1545U	150×450	150	450	378	95	15(3+12)	100	50	25	14	93	17	568	146	DC90V	0.24A	56Kg
KET-2050U	200×500	200	500	438	95	15(3+12)	100	50	25	14	122	17	618	175	DC90V	0.33A	76Kg
KET-2060U	200×600	200	600	528	95	15(3+12)	100	50	25	14	122	17	718	175	DC90V	0.42A	91Kg

鐘通工業股份有限公司保有隨技術發展而衍生修改的權利。
KANETSU KOGYO CO., LTD. reserve the right to bring up any modification connected with the technological development.

