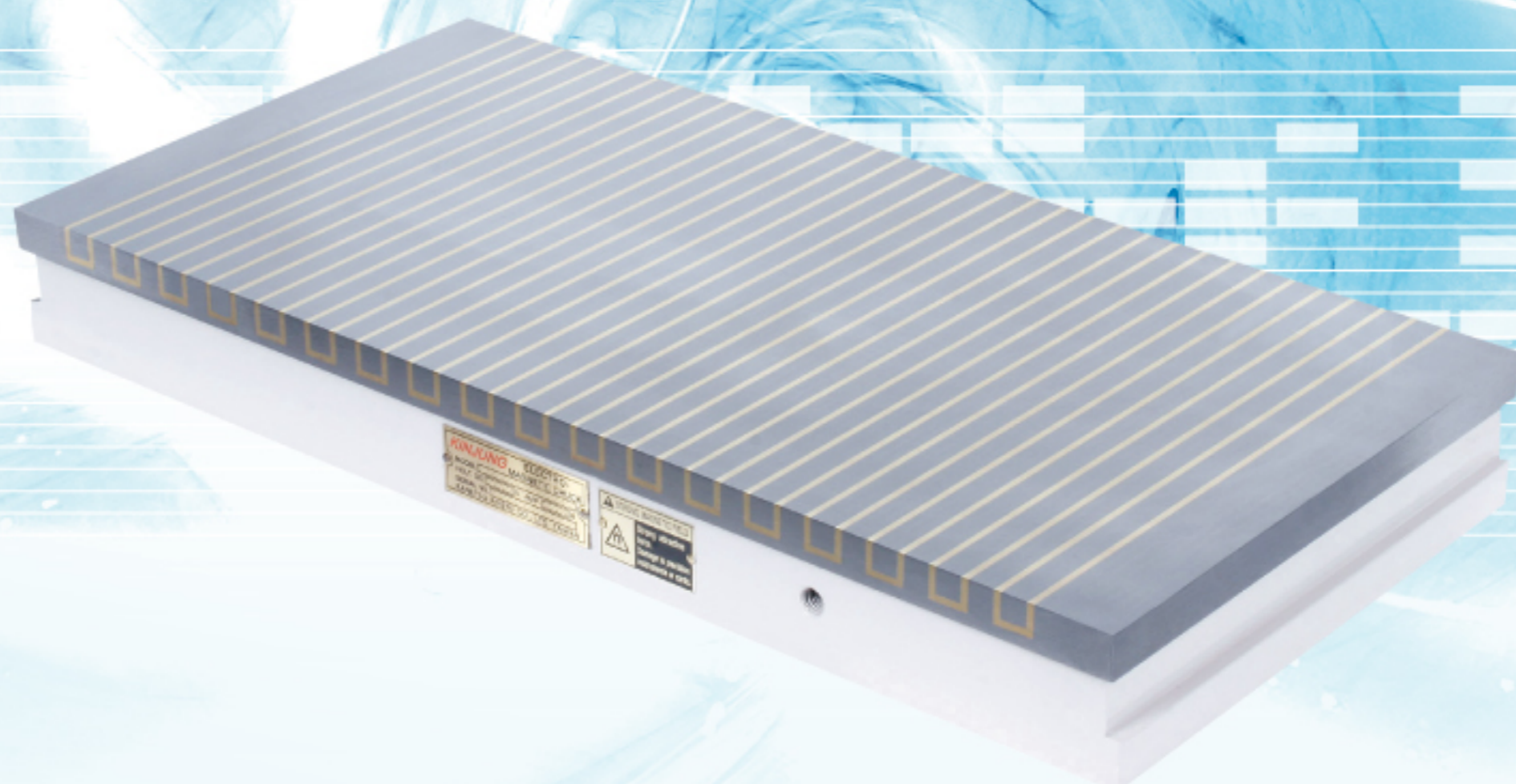
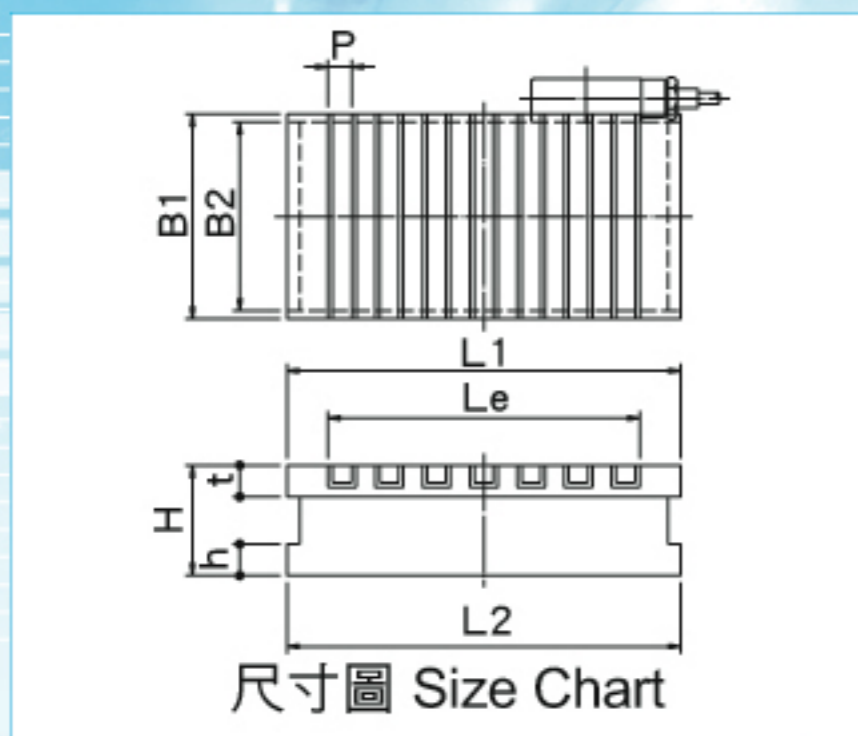


# 標準型電磁夾盤 Standard Electro Magnetic Chuck

## KET-K



鐘通工業股份有限公司  
KANETSU KOGYO CO., LTD.



### 用途:

最適合研削作業之標準型電磁夾盤。

### 特性:

- 高剛性，高精度  
不同於常規焊接構造，本公司採用之製程能增加電磁夾盤之剛性，因此使時間上的品質與精度變化減到最低。
- 減少夾盤重量  
減少夾盤重量使減少磨床工作台的負載，而增加床的耐久性。
- 低高度  
夾盤高度減少到極限，因此可確保多樣工件之固定空間。

### Application:

Suitable standard electro magnetic chuck of grinding operation.

### Features:

- High rigidity with high precision.  
It is constructed by slotting the chuck top plate, and slotting the bottom case by our own processing method; this is unlike the conventional welding construction. Our method increases the rigidity of the electro magnetic chuck to minimize quality change in time and to improve the precision.
- Succeeded in reducing the weight  
The chuck weight was decreased as much as possible. This was in consideration to the factor regarding the table driving time of grinder.
- Low height with powerful attraction  
The chuck height is lowered to its limit, so as to enlarge the workpiece mounting space on the grinder.

### 規格表 Specification Table

型式 Model	尺寸 Nominal Dimension	夾盤作業面 Chucking Face				磁極間隔 Pole Pitch P	夾盤基準面 Chuck Mounting Part			高度 Height H	電壓 Voltage	電流 Current	重量 Weight
		B1	L1	t	Le		B2	L2	h				
KET-1530K	150×300	150	300	20	228	15(3+12)	140	300	20	70	DC90V	0.15A	21Kg
KET-1535K	150×350	150	350	20	288	15(3+12)	140	350	20	70	DC90V	0.23A	25Kg
KET-1540K	150×400	150	400	20	348	15(3+12)	140	400	20	70	DC90V	0.27A	29Kg
KET-1545K	150×450	150	450	20	378	15(3+12)	140	450	20	70	DC90V	0.24A	32Kg
KET-2040K	200×400	200	400	20	348	15(3+12)	190	400	20	70	DC90V	0.24A	38Kg
KET-2045K	200×450	200	450	20	378	15(3+12)	190	450	20	70	DC90V	0.35A	43Kg
KET-2050K	200×500	200	500	20	438	15(3+12)	190	500	20	70	DC90V	0.33A	47Kg
KET-2550K	250×500	250	500	20	438	15(3+12)	240	500	20	70	DC90V	0.60A	67Kg
KET-2560K	250×600	250	600	20	528	15(3+12)	240	600	20	70	DC90V	0.69A	80Kg
KET-3060K	300×600	300	600	20	528	15(3+12)	290	600	20	70	DC90V	0.88A	97Kg
KET-3070K	300×700	300	700	20	618	15(3+12)	290	700	20	70	DC90V	1.00A	111Kg
KET-3090K	300×900	300	900	20	828	15(3+12)	290	900	20	70	DC90V	1.28A	145Kg
KET-4060K	400×600	400	600	25	516	19(3+16)	390	600	20	80	DC90V	0.80A	137Kg
KET-4070K	400×700	400	700	25	630	19(3+16)	390	700	20	80	DC90V	0.90A	162Kg
KET-4080K	400×800	400	800	25	744	19(3+16)	390	800	20	80	DC90V	1.06A	182Kg
KET-40100K	400×1000	400	1000	25	934	19(3+16)	390	1000	20	80	DC90V	1.37A	228Kg
KET-50100K	500×1000	500	1000	25	934	19(3+16)	490	1000	20	80	DC90V	1.16A	285Kg
KET-50120K	500×1200	500	1200	25	1124	19(3+16)	490	1200	20	80	DC90V	1.20A	342Kg
KET-50150K	500×1500	500	1500	25	1428	19(3+16)	490	1500	20	80	DC90V	1.70A	428Kg
KET-60100K	600×1000	600	1000	25	934	19(3+16)	590	1000	20	80	DC90V	1.80A	342Kg
KET-60120K	600×1200	600	1200	25	1124	19(3+16)	590	1200	20	80	DC90V	2.20A	411Kg
KET-60150K	600×1500	600	1500	25	1428	19(3+16)	590	1500	20	80	DC90V	2.30A	513Kg

※除了上述外，尺寸可依需要訂做。

Size other than the above are available upon request.

※鐘通工業股份有限公司保有隨技術發展而衍生修改的權利。

KANETSU KOGYO CO., LTD. reserve the right to bring up any modification connected with the technological development.

